

Welcome to the summer 2017 edition of our newsletter, bringing you seasonal and topical information and updates, and essential tips for pet owners.

Including:

- ◆ AVP Update
- ◆ Pet Allergy Awareness
- ◆ Is your pet summer body ready?
- ◆ Summer Safety Tips for pets



## Do we have all your Contact Details?

We are constantly striving to improve our service to our clients. We are now able to offer a reminder for:

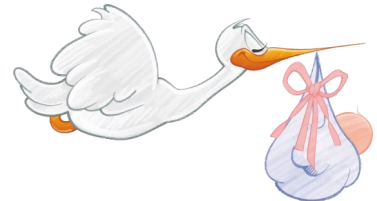
- ◆ *Your Appointments*
- ◆ *Booster vaccination,*
- ◆ *Parasite control*

via text messaging & /or email

In order for us to do this we need to have mobile phone numbers & email addresses on our computer system.

Please help us stay in touch by keeping our reception team up to date with your details, either by email, telephoning us or on your next visit by completing a form in reception. Please also make it clear if you would prefer to opt out of this system.

## Arrowfield Update .....



### New Baby

We are delighted to be able to share our head nurse Vanessa and husband Jim's fantastic news! We can announce the safe arrival of their baby daughter Gwen Beatrice. Baby Gwen wasn't due until 23rd June but was born a month early on 24th May, weighing a very healthy 5lb 5oz and both mother and baby are doing well.

We are all very excited and cannot wait to meet her.

## Welcome to 2 new members of the nursing team.

### Abbey Skyrme (Trainee Animal Nursing Assistant)

- joined us at the end of March as part of Vanessa's maternity cover. Abbey has settled in very well to her new role and is already a valued member of the nursing team, alongside occasional cover for the reception team both at Kington and Presteigne.



**Amy Billings RVN**— joined Arrowfield this week and will be working two days a week to help cover Vanessa's maternity leave. Amy has a wealth of experience working in both small animal, mixed practice and at London Zoo and Battersea Dogs Home.



## Pet Allergy Week is back from 5th—11th June 2017

An allergy is a reaction of the immune system to common substances known as allergens. Allergens include; foods, pollens from trees, flowers and grasses, moulds, dusts and storage mites, fleas, dander and many more.

Allergies can be immediate or occur within a few hours of days:

- ◆ **Skin and ear problems:** Itching, scratching, face rubbing, paw chewing, persistent licking and over grooming.
- ◆ **Ear Problems:** swelling, itching and soreness
- ◆ **Gastrointestinal problems:** diarrhoea, vomiting, loss of appetite, weight problems.
- ◆ **Hair loss**
- ◆ **Low stamina and energy levels**
- ◆ **Behavioural problems**

We can now run blood tests to help identify allergies to help manage allergic conditions and improve your pets quality of life.

During Pet Allergy Week why not take advantage of the discounted Allergy Tests, so make an appointment to speak to our vets today. For more information visit: [www.animal-allergy.com](http://www.animal-allergy.com)

### Is your pet summer body ready?

Obesity is an increasingly large problem in pets with as many as 2 in 3 pets being over their ideal bodyweight. Pets that are overweight are at a substantially increased risk of developing diabetes, heart disease, osteoarthritis, Infertility and are proven to have a reduced life expectancy, depending on severity of these conditions.

Have a look at the questions below; if the answer is YES to any of them it could be an indicator that your pet is overweight.

- ⇒ Is he/she struggling with their normal walks?
- ⇒ Are they lacking a clear waist and easily palpable ribs?
- ⇒ Do they snore?



Our Registered Veterinary Nurses are available for free weight discussions and clinics, we can assess your pet's diet and lifestyle and suggest hints and tips to help with a weight loss plan. We are not here to judge you but to help make changes to improve your pet's health.

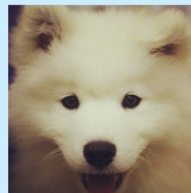
### More tips for keeping your pets safe as the summer heats up .....

#### **Dogs Die In Hot Cars NEVER Leave Your Dog Alone In Your Vehicle**

|            | Temperature Outside The Car/Caravan |        |        |        |
|------------|-------------------------------------|--------|--------|--------|
|            | 21.0°C                              | 24.0°C | 26.0°C | 29.0°C |
| Time       | Temperature Inside The Car/Caravan  |        |        |        |
| 10 Minutes | 31.6°C                              | 34.4°C | 37.0°C | 40.0°C |
| 20 Minutes | 37.0°C                              | 40.0°C | 43.0°C | 45.5°C |
| 30 Minutes | 40.0°C                              | 43.0°C | 45.5°C | 48.3°C |

It Only Takes A Few Minutes For The Inside Of Your Vehicle To Reach Killer Temperatures  
The Temperature Inside Your Vehicle Will Rise Even If You Park In The Shade Or The Day Is Cloudy

#### **5 signs of heat stroke in dogs**



1. Excessive & ongoing panting
2. Brick-red or blue-purple gums
3. Lethargic, collapsed, seizures
4. Excessive drooling
5. History of exercise on a hot day, being left unattended in a hot car, or unable to get out of the sun

If you suspect your dog is suffering from heat stroke then you need to contact your vet immediately!